

# μ-base - Stand alone ADM



## $\mu$ -base - Stand alone ADM

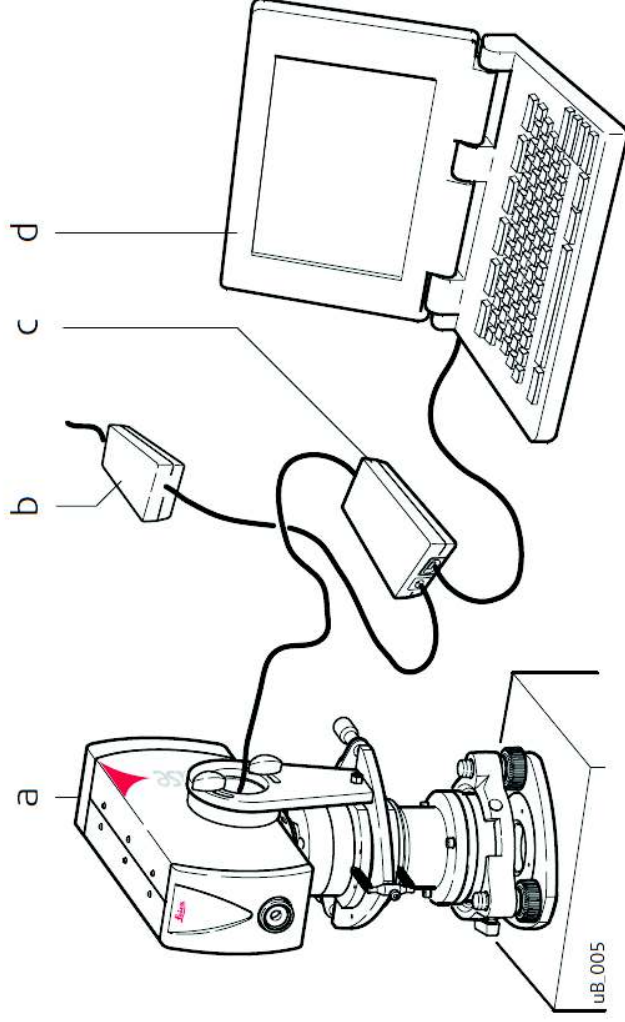


- Description:**
- The Leica  $\mu$ -base stand alone Absolute Distance Meter (ADM) is a distance measurement device with micron level resolution.
- Features:**
- Measures linear distances
  - Fine Aiming Device on survey tribrach
  - Ball mount interface ( $\varnothing$ 100mm)
  - Supports variety of reflector types
  - $\mu$ -base Pilot application software
  - Programming Interface - Leica Metrology Foundation (LMF)

# μ-base - Stand alone ADM



## Operation Concept:



- a) μ-base module
- b) AC/DC adapter
- c) Interface Box
- d) Application computer

# μ-base - Stand alone ADM

## μ-base Pilot SW:



- μ-base Pilot title bar
- Windows title bar
- Windows controls
- μ-base Pilot controls
- Measurement Status bar
- Measurement Grid
- Status bar

## μ-base - Stand alone ADM



### Specification:

ADM Accuracy (MPE) ±10 μm  
ADM Laser Classification Class 1  
Laser Pointer Class 2

### Range:

Distance to 1.5" RRR 160 m (typical)  
Horizontal (Ball Mount, ø 100mm) 360 deg (endless rotation)  
Vertical (Ball Mount, ø 100mm) ± 25 deg